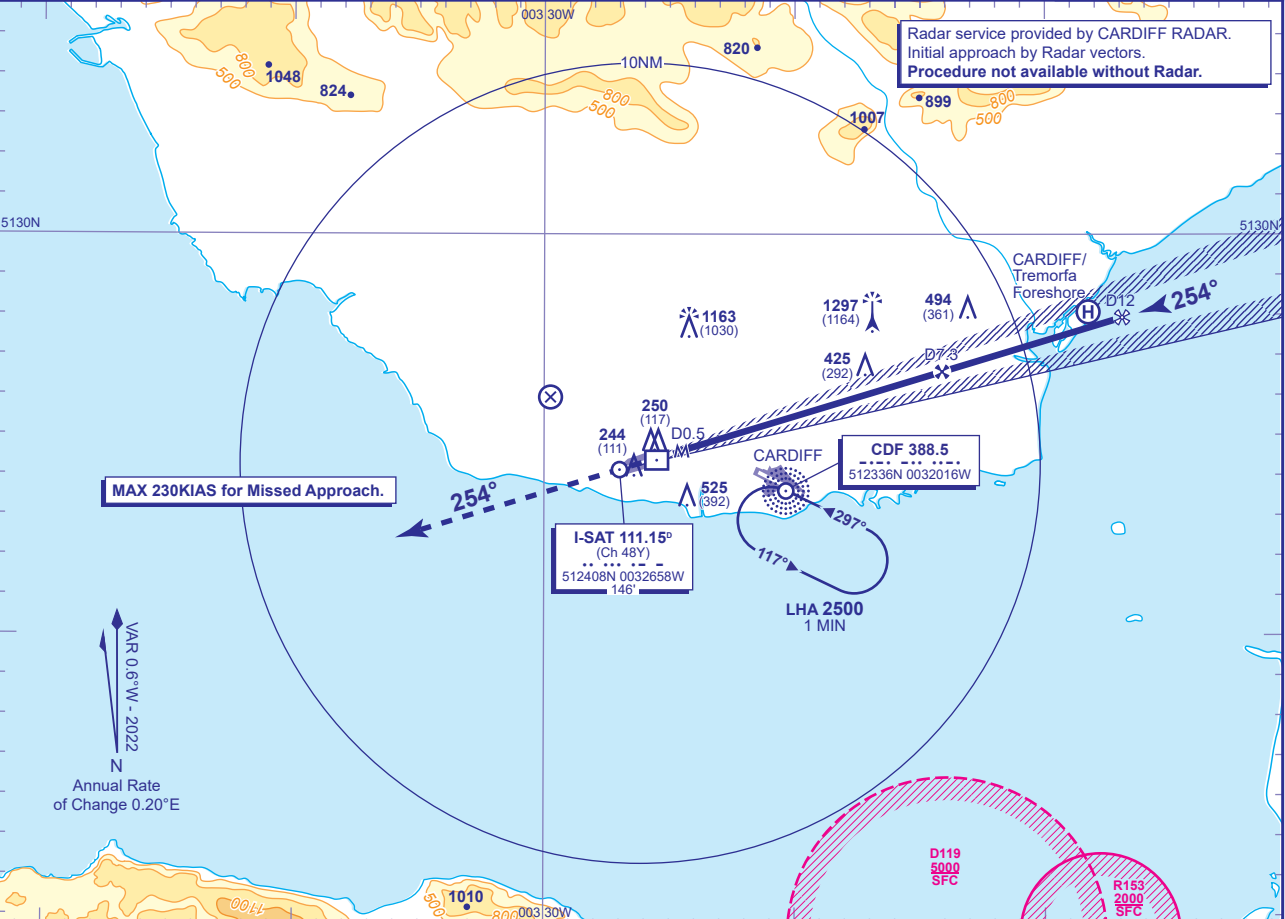


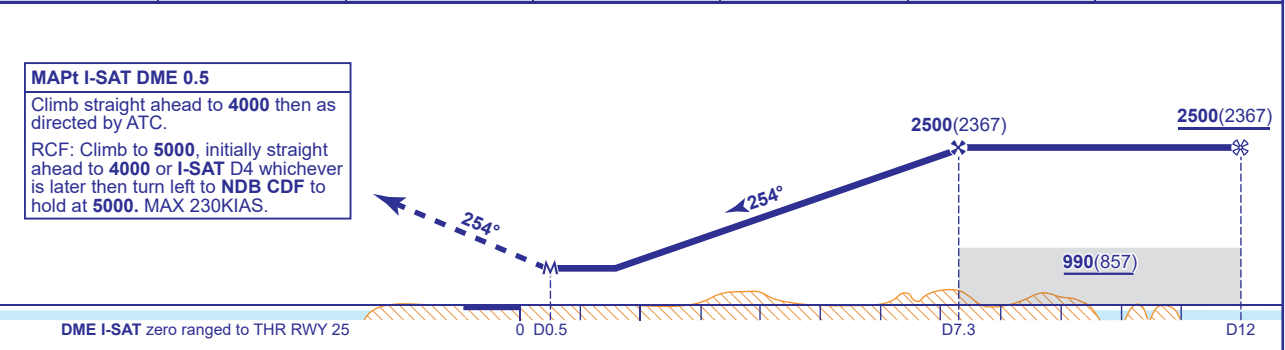
INSTRUMENT APPROACH CHART - ICAO

ST ATHAN
LOC/DME
RWY 25
(ACFT CAT A,B,C,D)

	APP 119.155, 125.855	CARDIFF APPROACH	AD ELEVATION 164	TRANSITION ALTITUDE 6000
	RAD 125.855	CARDIFF RADAR	THR ELEVATION 133	
	TWR 122.865	ST ATHAN TOWER	OBSTACLE ELEVATION 1297 AMSL (1164) (ABOVE THR)	
	ATIS 130.560	ST ATHAN INFORMATION	BEARINGS ARE MAGNETIC	



RECOMMENDED PROFILE Gradient 5.2%, 318FT/NM						
DME I-SAT	7	6	5	4	3	2
ALT(HGT)	2410(2277)	2090(1957)	1780(1647)	1460(1327)	1140(1007)	820(687)



Aircraft Category		A	B	C	D	Rate of descent	G/S KT	160	140	120	100	80
OCA (OCH)	Procedure	680(547)	680(547)	680(547)	680(547)		FT/MIN	850	740	640	530	420
VM(C)OCA (OCH AAL)	Total Area	830(666)	830(666)	1560(1396)	1560(1396)							

CHANGE (8/21): CARDIFF APPROACH FREQUENCY AMENDED.